



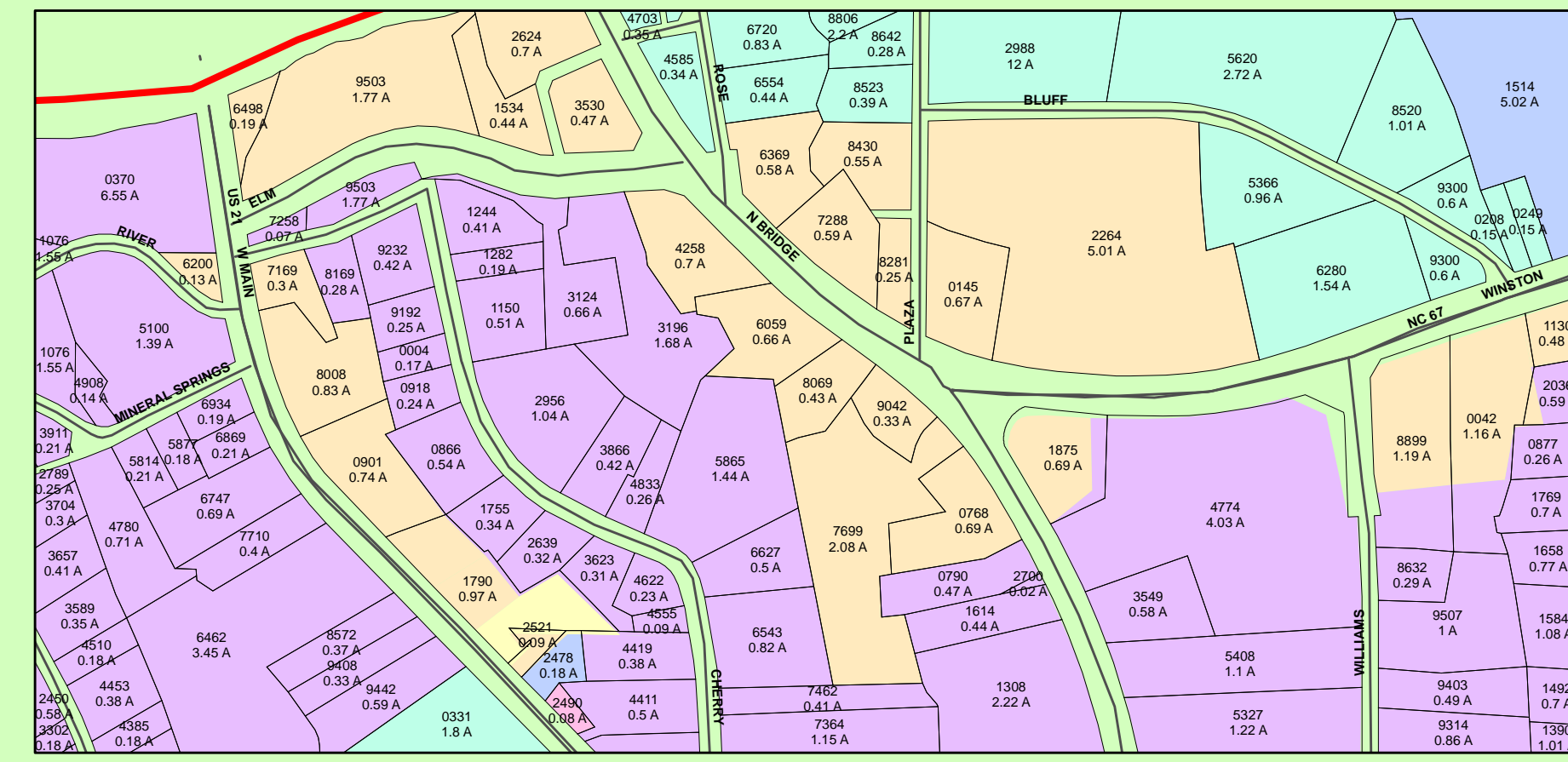
# Town of Jonesville Zoning Map



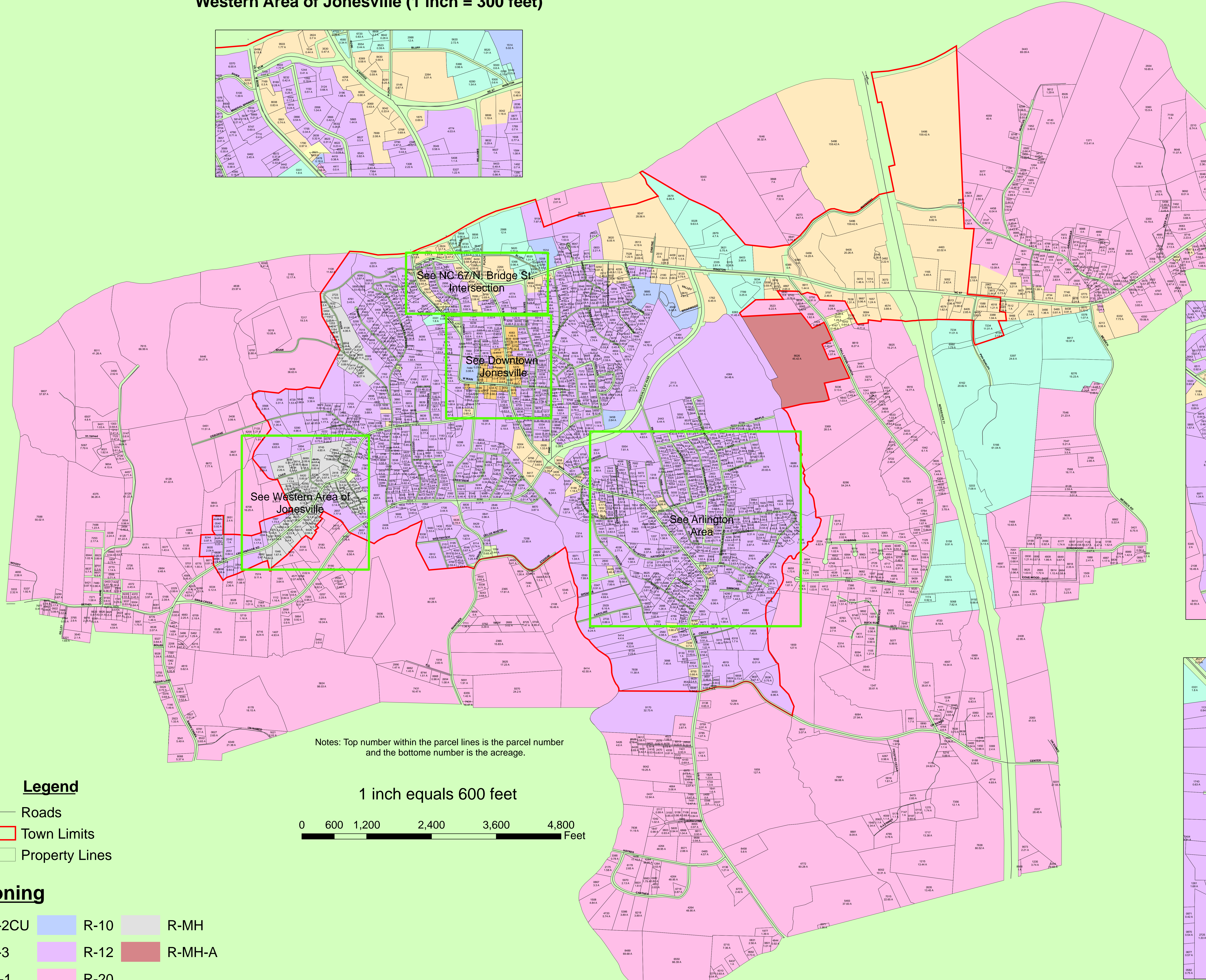
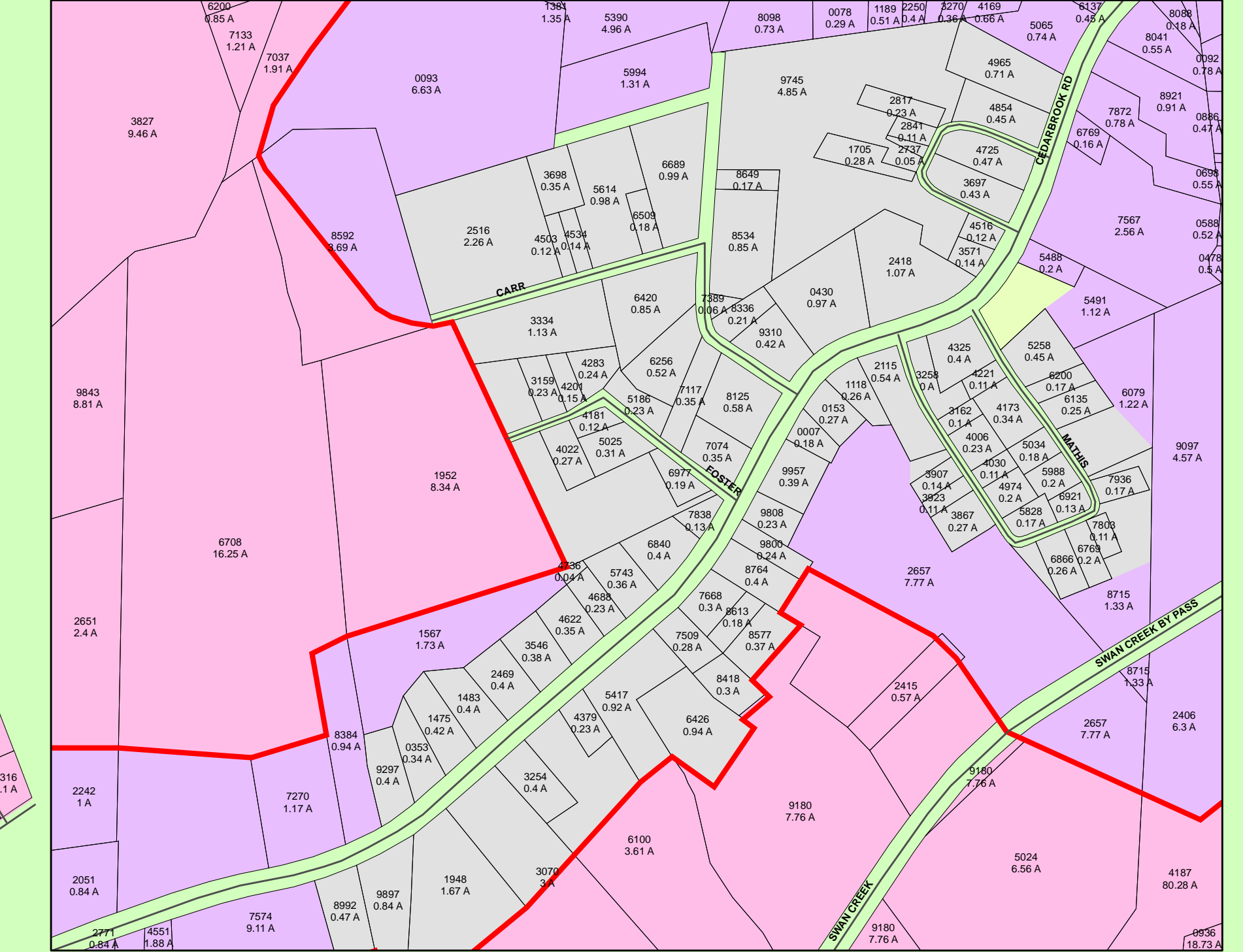
**Sources:**  
The information contained on this site is furnished by government and private industry sources and is believed to be accurate but accuracy is not guaranteed. Mapping information is a representation of various data sources and is not a substitute for information that would result from an accurate land survey or engineer. The information contained herein does not constitute information that may be obtained by consulting the information's official source. In no event shall Northwest Piedmont Council of Governments be liable for any damages, direct or consequential, from the use of the information contained on this site. Source data is obtained by the counties and municipalities within Region 1 (Forsyth, Stokes, Surry, Yadkin, and Davie County), United States Census Bureau, United States Geological Survey (USGS), North Carolina Department of Transportation

Cartographic design & digital compilation by  
Northwest Piedmont Council of Governments  
Using ArcMap in ArcInfo 9.x  
Projection: StatePlane  
Units: Feet  
Datum: NAD83  
Zone: North Carolina (2000)  
Date Created: 11/8/05

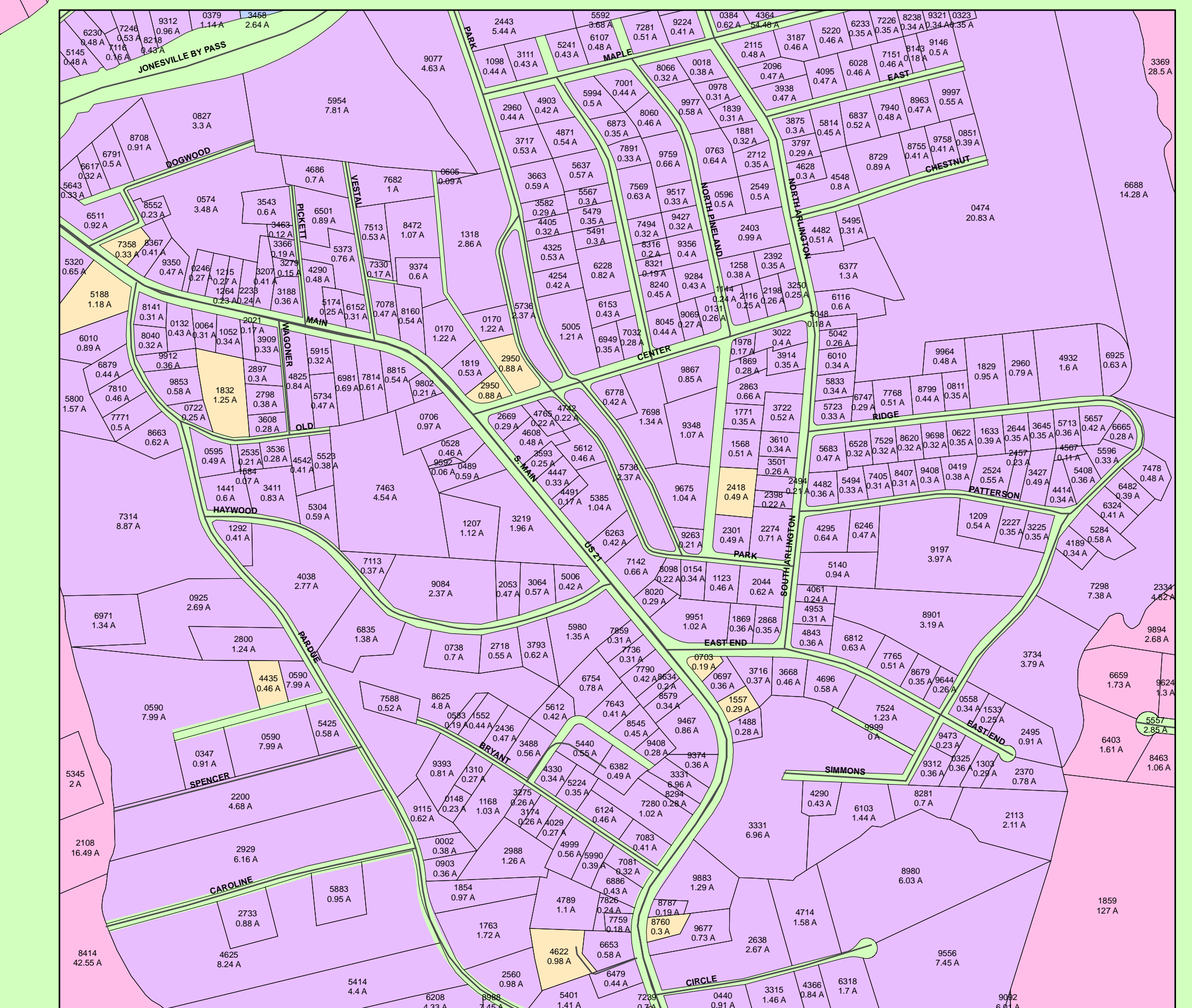
### Western Area of Jonesville (1 inch = 300 feet)



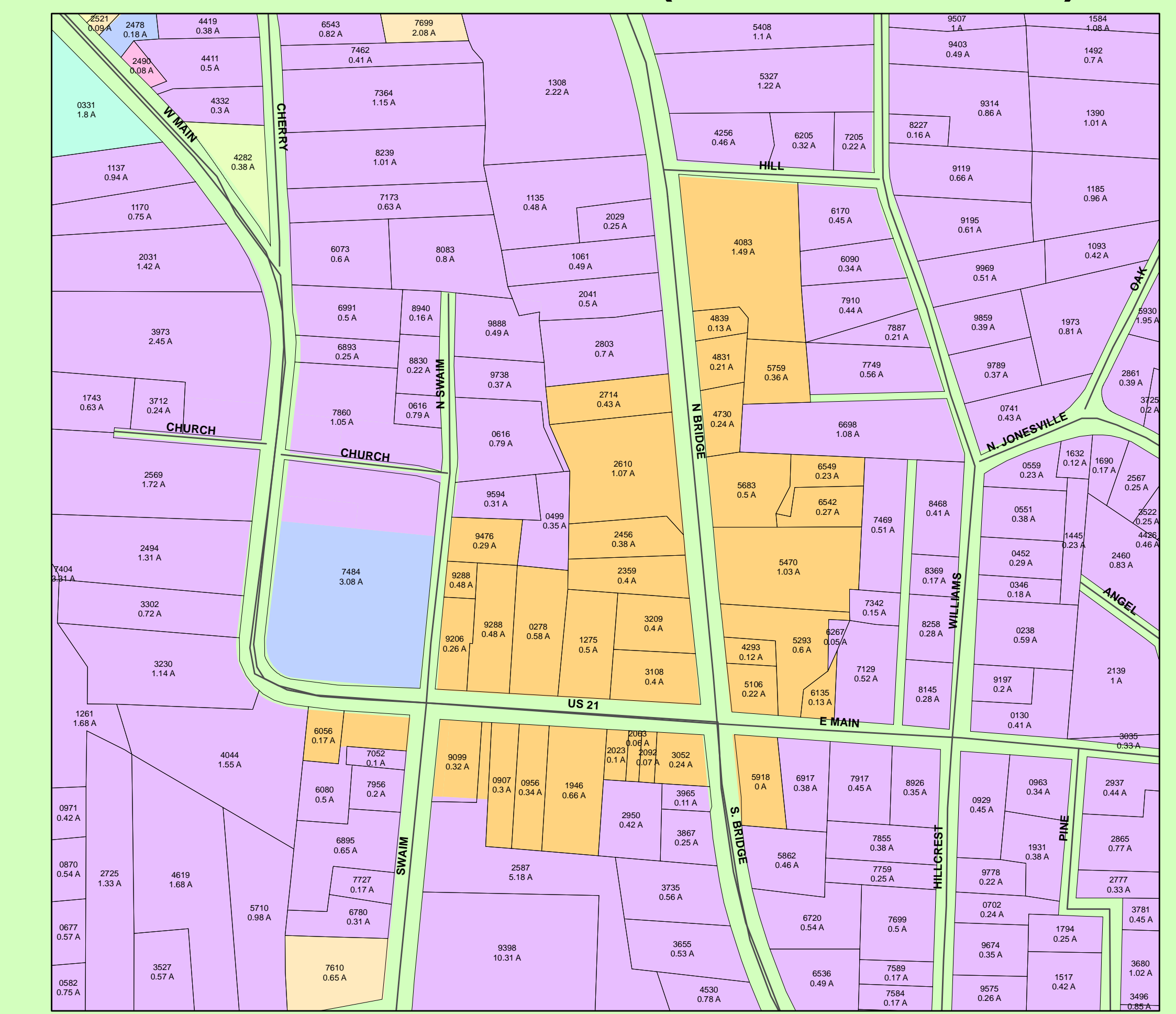
### Western Area of Jonesville (1 inch = 300 feet)



### Arlington Area (1 inch = 400 feet)



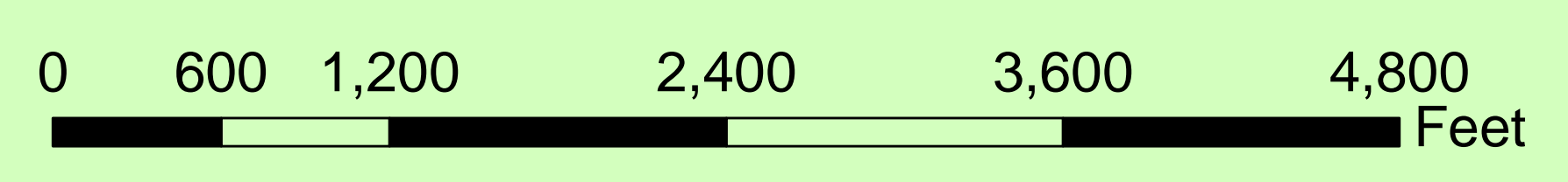
### Downtown Jonesville (1 inch = 200 feet)



Zoning Districts	Definitions
R-20	R-20 Residential District: A low density residential district outside the corporate limits of Jonesville, but inside its extraterritorial jurisdiction where low density residential and agriculture uses are the primary activities.
R-12	R-12 Residential District: A medium density residential district inside the corporate limits where the primary uses are single-family dwelling units and other compatible uses such as churches and schools.
R-10	R-10 Residential District: A high density residential district inside the corporate limits.
B-1	B-1 Central Business District: A downtown retail and service district where setbacks - front, side, or rear - are not generally required.
B-2	B-2 General Business District: A business district along the major thoroughfares in the community.
B-3	B-3 Neighborhood Business District: A neighborhood business district for small scale retailing of goods and services to the adjacent residential neighborhood.
M-1	M-1 Manufacturing District: An industrial, wholesaling, and warehousing district.
R-MH	R-MH Residential-Manufactured Housing: Within the R-12 Residential District, manufactured housing units are not permitted by right but the Town of Jonesville can designate a specific area within this district to permit manufactured housing that meets certain development standards.

Notes: Top number within the parcel lines is the parcel number and the bottom number is the acreage.

1 inch equals 600 feet



To get more detailed definitions of zoning see the Town of Jonesville Town Hall.

### Legend

- Roads
- Town Limits
- Property Lines

### Zoning

- ARLINGTON
- B-2CU
- R-10
- R-MH
- B-1
- B-3
- R-12
- R-MH-A
- B-2
- M-1
- R-20